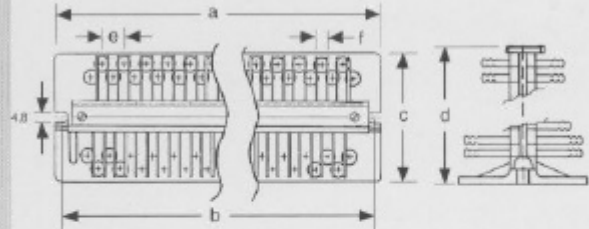
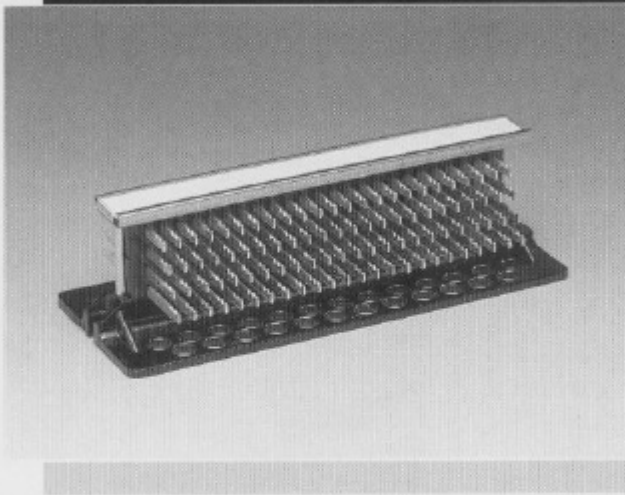


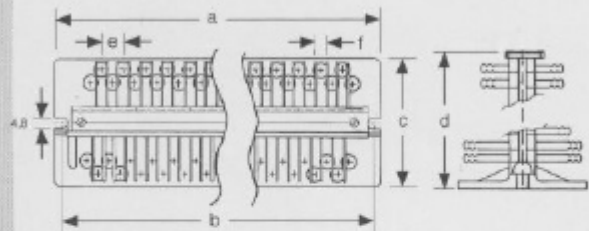
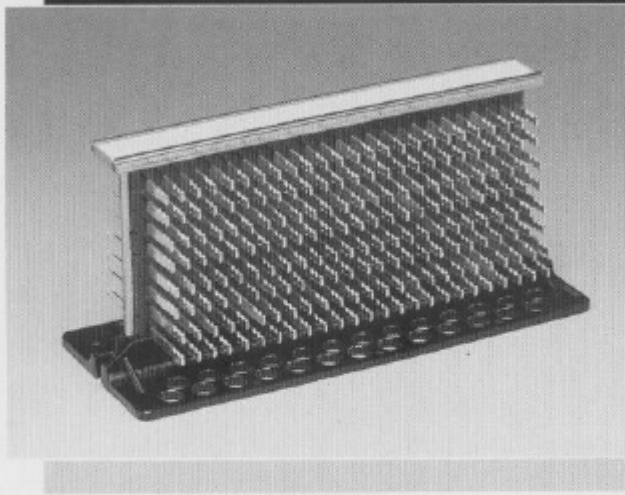
# TELECOM STRIP – SOLDERING

## Strisce componibili a saldare Soldering strips



Codice Code	Tipo Model	Tolleranze (Tolerance) ± 0,2					
		a	b	c	d	e	f
2242.S	24 x 2	178	170	70	36	12	6
2243.S	24 x 3	178	170	70	44	12	6
2244.S	24 x 4	178	170	70	52	12	6
2245.S	24 x 5	178	170	70	60	12	6
2246.S	24 x 6	178	170	70	68	12	6
2247.S	24 x 7	178	170	70	76	12	6
2248.S	24 x 8	178	170	70	84	12	6
2240.S	24 x 10	178	170	70	100	12	6

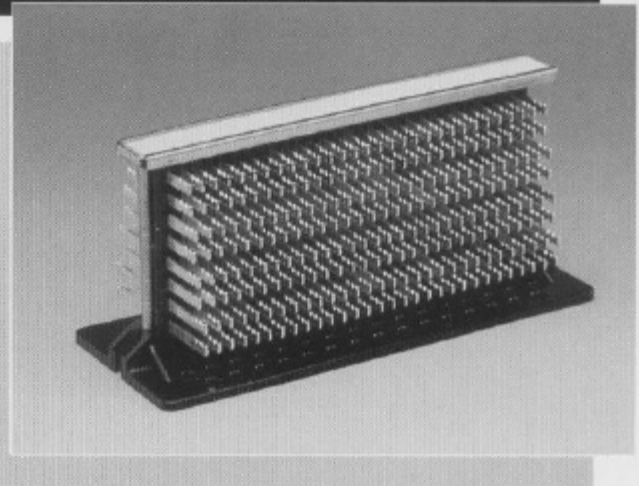
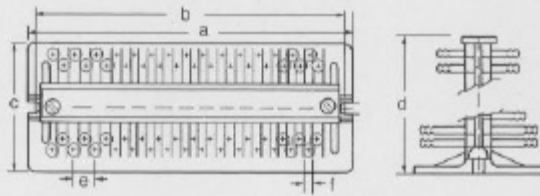
## Strisce componibili a saldare Soldering strips



Codice Code	Tipo Model	Tolleranze (Tolerance) ± 0,2					
		a	b	c	d	e	f
2252.S	25 x 2	179	170	70	36	12	6
2253.S	25 x 3	179	170	70	44	12	6
2254.S	25 x 4	179	170	70	52	12	6
2255.S	25 x 5	179	170	70	60	12	6
2256.S	25 x 6	179	170	70	68	12	6
2257.S	25 x 7	179	170	70	76	12	6
2258.S	25 x 8	179	170	70	84	12	6
2250.S	25 x 10	179	170	70	100	12	6

## TELECOM STRIP – SOLDERING

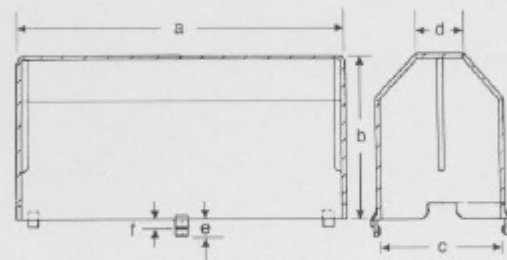
Strisce componibili a saldare  
*Soldering strips*



Codice Code	Tipo Model	Tolleranze (tolerance) $\pm 0,2$					
		a	b	c	d	e	f
2302.S	30 x 2	178	170	70	36	10	5
2303.S	30 x 3	178	170	70	44	10	5
2304.S	30 x 4	178	170	70	52	10	5
2305.S	30 x 5	178	170	70	60	10	5
2306.S	30 x 6	178	170	70	68	10	5
2307.S	30 x 7	178	170	70	76	10	5
2308.S	30 x 8	178	170	70	84	10	5
2300.S	30 x 10	178	170	70	100	10	5

## TELECOM STRIP – SOLDERING STRIP CAP

Cappa per strisce a saldare  
*Soldering strips cap*



Codice Code	Tipo Model	Tolleranze (tolerance) $\pm 0,2$					
		a	b	c	d	e	f
1308.3	24-25-30	178	88	70	27	8	5